
AIR FORCE RESCUE COORDINATION CENTER



2007 ANNUAL REPORT

TABLE OF CONTENTS

AFRCC CHARTER & MISSION STATEMENT	3
AFRCC ORGANIZATION	4
TABLE 1 TEN YEAR LOOKBACK	5
TABLE 2 ACTIVITY BY MISSION TYPE	6
TABLE 3 FINAL STATUS OF OBJECTIVES	7
TABLE 4 MONTHLY MISSION ACTIVITY	8
TABLE 5 FINAL STATUS OF ELT MISSIONS	9
TABLE 6 SRU SORTIE DATA	10
TABLE 7 TOTAL ACTIVITY BY SRU	11
TABLE 8 TOTAL ACTIVITY BY STATE	14

AFRCC CHARTER & MISSION STATEMENT

CHARTER

In 1956, the National Search and Rescue Plan was published to establish a crucial link between military resources, their unique recovery capabilities, and the civilian sector chartered to respond to those in need. This plan established the United States Air Force as the Executive Agent for Inland Search and Rescue. It serves as the single agency responsible for coordinating inland federal search and rescue activities in the 48 contiguous United States.

MISSION STATEMENT

Continuously building a coordinated Search and Rescue network ensuring timely, effective lifesaving operations **WHENEVER** and **WHEREVER** needed.

COOPERATION

COORDINATION

EDUCATION

AFRCC ORGANIZATION

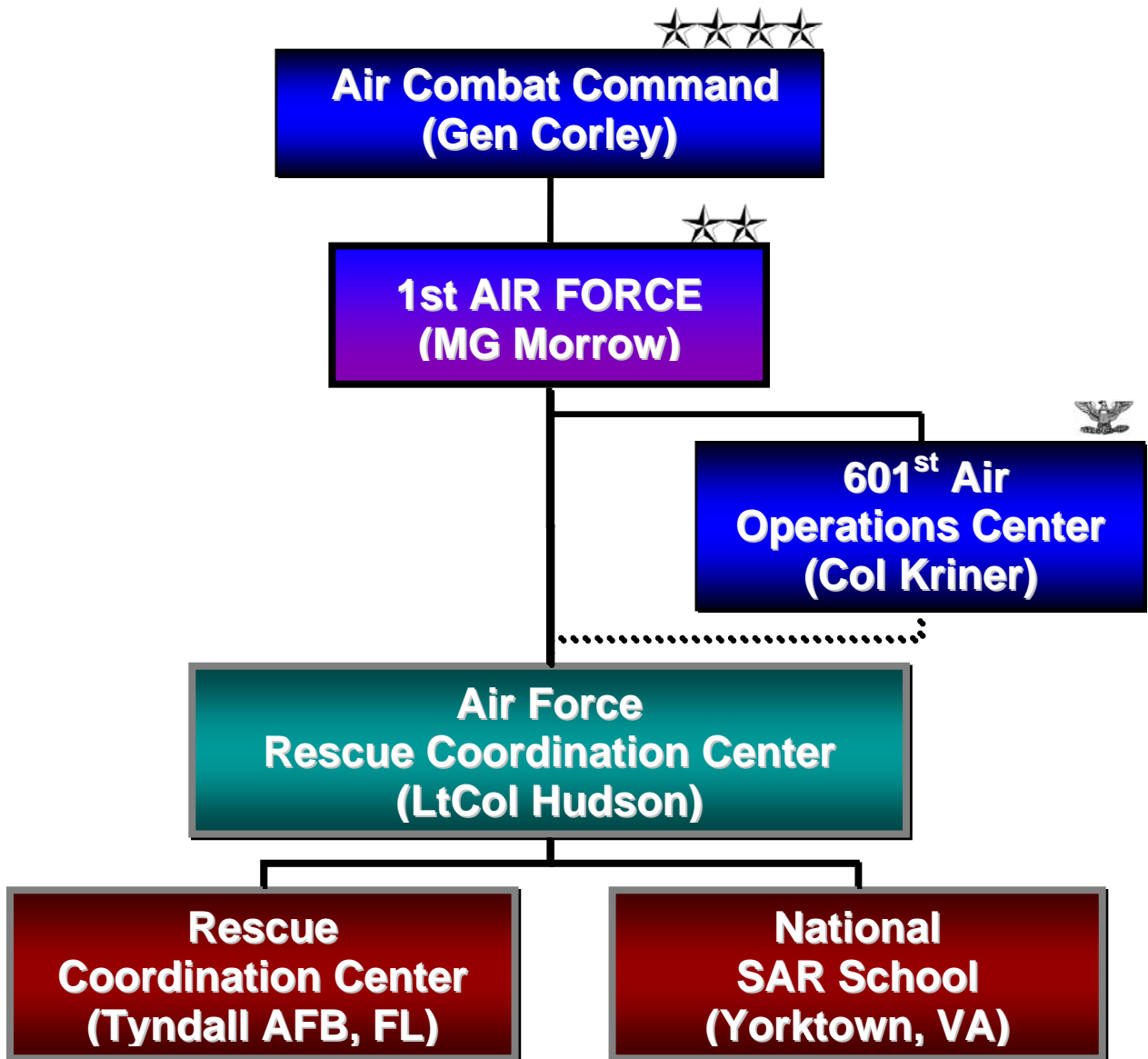


TABLE 1

TEN YEAR LOOKBACK

Our yearly activity table illustrates the AFRCC’s total operational workload (missions and incidents) over the past ten years. This year ended with a 1 percent decrease in mission activity from the last; incidents increased by .1 percent and saves increased by 49 percent.

MISSION: A Search and Rescue event in which a federal asset has been used.

INCIDENT: A Search and Rescue event prosecuted without using a federal asset.

SAVE: Total number of lives saved for that year.

	1998	1999	2000	2001	2002	2003	2004	2005	2006	2007
MISSIONS	2851	2719	2739	2814	2989	2937	2734	2441	2438	2296
INCIDENTS	7639	7717	7062	7333	7728	7465	6697	6500	7249	7322
SAVES	202	119	129	149	173	154	107	275	237	468

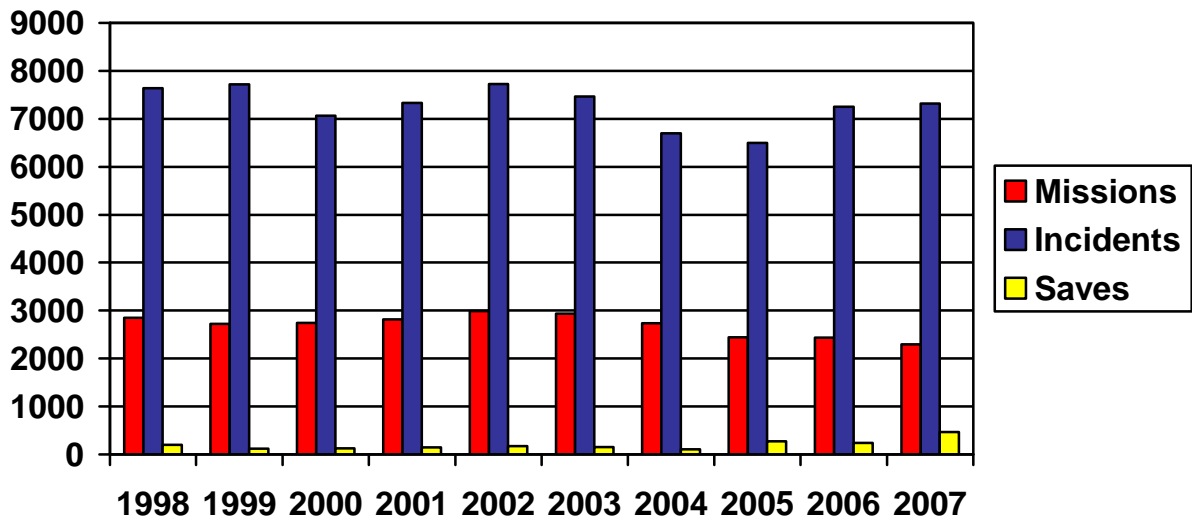


TABLE 2

ACTIVITY BY MISSION TYPE

This table displays the distribution of AFRCC missions by mission type. 85% of our total workload was focused on resolving ELT incidents.

AIRCRAFT: Search for a missing or overdue aircraft

BOAT: Search for a missing vessel

ELT/EPIRB/PLB: Search for a radio distress beacon

MEDEVAC: Hospital-to-hospital transfer in a life-or-death situation

MERCY: Blood and/or organ transport

MISSING PERSON: Search for missing person or persons

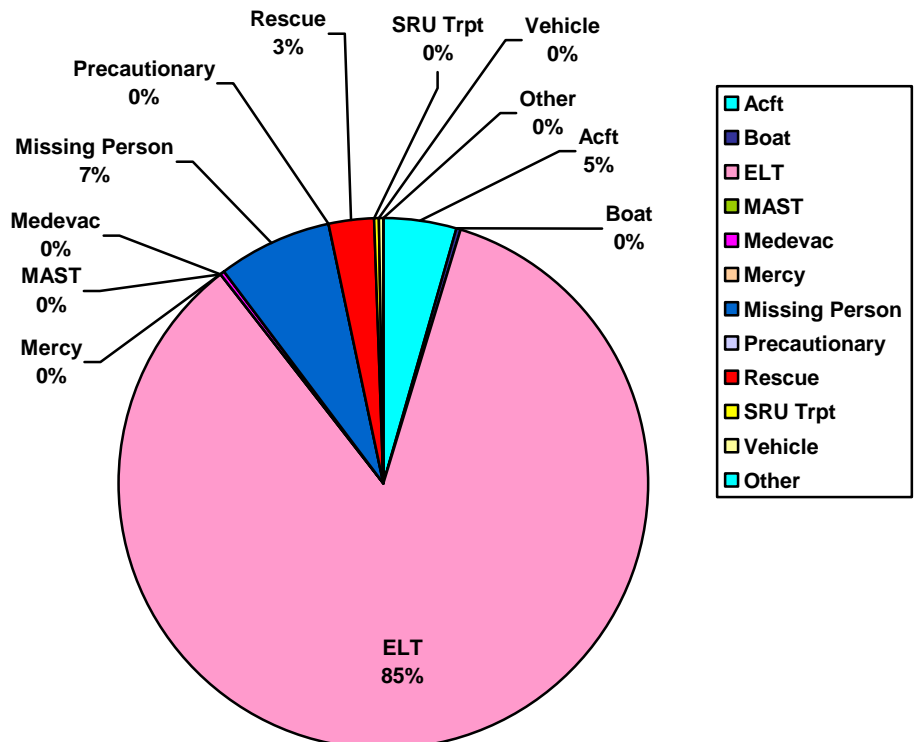
PRECAUTIONARY: Pre-positioning of SAR forces for use during a scheduled activity where the potential for SAR is high

RESCUE: Extraction from a known location

SRU TRANSPORT: Transport of non-federal Search and Rescue Units to a search location when the situation is urgent and needed to save life, limb, or eyesight

VEHICLE: Search for a missing vehicle (to assist in locating a missing person)

<i>Mission Type</i>	<i>Number of Missions</i>
AIRCRAFT	104
BOAT	6
ELT	1937
MAST	0
MEDEVAC	6
MERCY	1
MISSING PERSON	155
PRECAUTIONARY	5
RESCUE	63
SRU TRANSPORT	2
VEHICLE	9
OTHER	8
Total	2296



* All data pulled from SARMASTER and may not reflect all missions/incidents

TABLE 3

FINAL STATUS OF OBJECTIVES

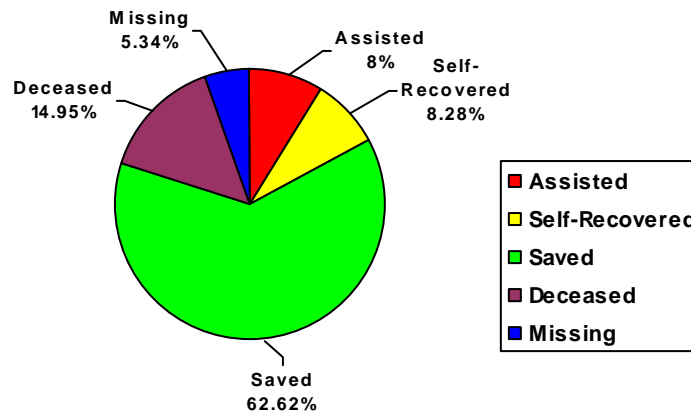
The Final Status of Objectives Distribution depicts the number of persons, defined as objectives, throughout all AFRCC mission types and their status at the conclusion or suspension of the mission.

SELF-RECOVERED: Objective was reported lost or missing, but returned without assistance to a safe location.

SAVED: Objective was located and in a life-or-death situation.

DECEASED: Self-explanatory.

MISSING: Objective was never located.



Situation	Assisted	Self-Recovered	Saved	Deceased	Missing
<i>Aircraft</i>	4	7	16	82	4
<i>Boat</i>	0	0	34	1	6
<i>ELT/EPIRB</i>	1	4	1	11	0
<i>Mercy</i>	1	0	4	0	0
<i>Missing Person</i>	49	35	81	14	26
<i>PLB</i>	3	0	2	0	0
<i>Rescue</i>	7	16	311	0	0
<i>SRU</i>	1	0	1	0	2
<i>Transport Vehicle</i>	0	0	0	2	1

* All data pulled from SARMASTER and may not reflect all missions/incidents

TABLE 4**MONTHLY MISSION ACTIVITY**

The Monthly Mission Activity charts the monthly operational workload by mission type.

	ELT	NON- AIRCRAFT (NOTE 1)	AIRCRAFT	TOTAL INCIDENTS	TOTAL MISSIONS	SAVES
JAN	447	37	31	515	139	20
FEB	454	34	19	507	139	13
MAR	598	28	23	649	188	11
APR	547	28	26	601	190	8
MAY	641	34	35	710	238	10
JUN	655	35	37	727	259	14
JUL	606	40	40	686	239	25
AUG	640	48	31	719	227	22
SEP	545	23	31	599	198	40
OCT	554	18	48	620	199	6
NOV	455	29	27	511	138	12
DEC	443	22	13	478	142	287
TOTAL	6585	376	361	7322	2296	468

NOTE 1: Non-aircraft missions include missing persons, boat, MAST, SRU transport, and vehicle missions.

TABLE 5

FINAL STATUS OF ELT MISSIONS

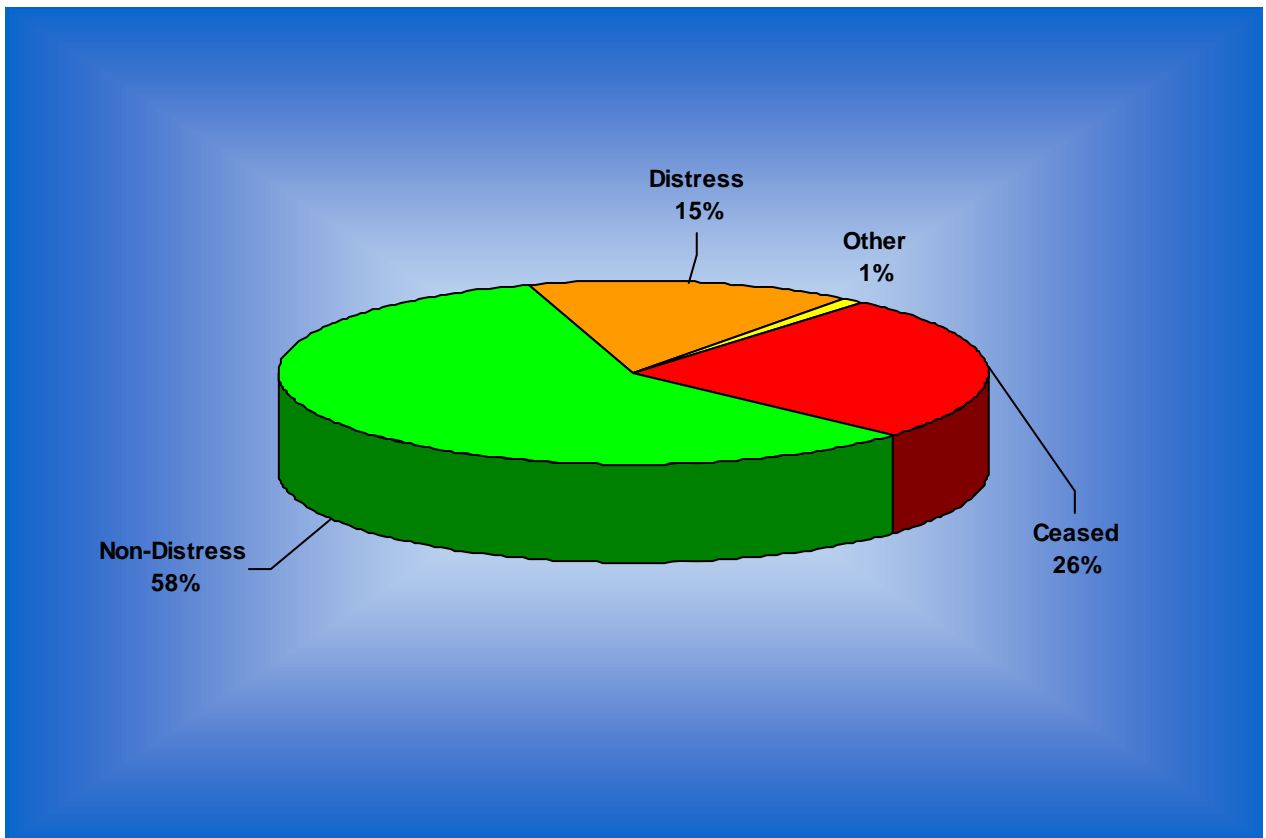
The Final Status of ELT Missions table depicts the final status, by percentage, of our ELT missions.

CEASED: ELT signal stopped before being located.

DISTRESS: The signal was activated due to a situation, such as an aircraft mishap, or a vessel sinking.

NON-DISTRESS: The signal was caused by a malfunction, mishandling, battery failure, accidental activation, hard landings, or a reason other than a mishap.

OTHER: The signal was false or it was a hand-off.



* All data pulled from SARMASTER and may not reflect all missions/incidents

TABLE 6**SRU SORTIE DATA**

The Search and Rescue Unit (SRU) Sortie Data table charts the total federal effort, by mission type, contributed by SAR aircraft.

<u>TYPE MISSION</u>	<u>HOURS</u>	<u>SORTIES</u>	<u>AIRCRAFT</u>	<u>MISSIONS</u>
AIRCRAFT	3903.8	1544	894	104
BOAT	108.9	16	15	6
ELT	2067.02	1044	89	1937
MAST	0	0	0	0
MEDEVAC	18.05	6	6	6
MERCY	16.7	5	3	1
MISSING PERSON	789.54	325	229	155
PRECAUTIONARY	28.6	17	12	5
RESCUE	285.28	161	87	63
SRU TRANSPORT	14.5	9	3	2
VEHICLE	71.1	32	20	9
OTHER	0	0	0	8
TOTALS	7303.49	3159	2158	2296

* All data pulled from SARMASTER and may not reflect all missions/incidents

TABLE 7**TOTAL ACTIVITY BY SRU**

The Total Activity by SRU table charts the total contribution of flying hours, sorties, aircraft, personnel and missions by SRU or agency. This table also attributes saves, where applicable.

SRU NAME	MISSIONS	PERSONNEL	AIRCRAFT	SORTIES	FLT HRS	SAVES
1/159 AVN	1	5	1	1	2.8	0
1/189 AVN	1	4	1	1	4.7	4
102 RQS	2	42	6	7	19.67	0
106 RQW	2	37	4	5	28.4	0
129 RQS	1	2	0	0	0	0
143 RD TAG	1	9	1	1	8.6	0
145 TH AW	1	5	1	1	8	0
165 TH AW	1	10	1	1	9	0
301 RQS	2	31	5	3	16.6	0
301 RQW	4	39	9	11	21.6	2
304 RQS	2	8	0	0	0	3
347 RQW	1	1	0	0	0	31
36 RQF	17	99	22	39	84.5	292
37 HF	3	27	6	10	28.3	1
39 RQS	2	19	2	2	10	1
40 HF	10	49	11	21	33.2	12
41 RQS	1	7	1	1	7.5	1
512 RQS	2	18	3	4	11.8	1
512 SOS	1	9	2	4	8.5	0
54 HELO FLT	1	15	3	3	9.1	0
55 RQS	6	76	13	18	53.55	6
505 SOS	2	14	2	2	8.4	1
66 RQS	6	38	7	12	24.3	5
71 RQS	3	25	2	2	13	1
71 SOS	1	5	1	2	2.8	0
76 HF	1	4	1	1	5	1
84 RADES	1	1	0	0	0	0
9 SOS	1	0	0	0	0	1
920 RQW	4	36	5	5	25	31
965 AACS	1	29	1	1	7.7	0
AR DEM	1	1	0	0	0	0
AZ DEM	2	4	1	1	.98	1
CA OES	1	1	0	0	0	0
CG D1	1	15	4	4	3.5	0
CG D13	4	19	4	4	8.2	3
CG D7	1	16	2	2	15.13	0
CG D9	8	40	7	11	13.6	5

CGAS ASTORIA	10	57	10	13	29.25	9
CGAS DETROIT	1	4	1	1	1.1	0
CGAS HUMBOLDT	2	10	2	2	2	0
CGAS NORTH BEND	4	15	4	5	6.8	4
CGAS PORT ANGELES	4	72	12	59	72.3	283
CGAS SAN DIEGO	1	4	1	1	3.7	1
CGAS SAVANAH	1	3	1	1	.7	0
CGAS TRAVERSE CITY	8	34	8	11	18	3
CO ARNG	10	40	14	20	56.8	9
FCC	17	23	0	0	0	0
FL DEM	7	0	0	0	0	0
FORT LEWIS	1	7	1	1	1.1	1
ID AIR NG	3	7	2	3	5.8	2
ID ARNG	2	4	1	1	1.15	2
KY ARNG	1	15	6	6	8.2	0
MCAS YUMA	9	39	9	13	15.15	6
MT ARNG	1	8	2	4	9.4	2
MT DOA	1	1	0	0	0	0
NAS CHINA LAKE	3	23	9	5	25	2
NAS FALLON	13	123	21	32	54.6	4
NAS LEMOORE	4	16	4	6	17.2	4
NAS WHIDBEY ISLAND	17	104	30	30	54.49	293
NM AIR NG	1	9	1	4	6.9	0
SALEM ARNG	2	16	4	4	13.4	3
TN EMA	1	1	0	0	0	0
WA DOA	1	88	35	49	155.6	0
AL CAP	44	464	55	108	172.55	1
AR CAP	38	318	46	95	139.95	1
AZ CAP	95	434	25	26	59.65	1
CA CAP	261	1910	316	446	1140.45	5
CO CAP	103	550	54	84	168.4	14
CT CAP	19	190	13	17	29.6	0
DE CAP	11	59	10	12	25.7	0
FL CAP	252	1658	111	138	260.25	0
GA CAP	87	590	63	101	203.75	0
IA CAP	21	225	25	34	57.3	2
ID CAP	43	376	58	84	195.8	11
IL CAP	41	414	29	42	62.2	3
IN CAP	13	229	12	24	33.5	2
KS CAP	32	251	24	44	134.19	1
KY CAP	20	185	13	22	33.9	2
LA CAP	58	229	33	51	77.7	2
MA CAP	24	145	19	31	47.7	0
MD CAP	39	267	17	19	46.4	0
ME CAP	24	132	14	19	30.1	2
MI CAP	27	360	33	50	128.5	0
MN CAP	37	414	38	52	90.25	6
MO CAP	35	306	18	16	29.9	2
MS CAP	34	175	17	21	44.1	1
MT CAP	9	229	13	20	23.6	0

NC CAP	83	656	65	98	191.2	3
ND CAP	8	49	5	6	21.1	0
NE CAP	11	132	30	53	48.3	6
NH CAP	11	89	5	5	7.6	1
NJ CAP	45	222	24	31	37	1
NM CAP	14	166	45	64	170.86	2
NV CAP	15	778	191	298	744.62	3
NY CAP	67	524	45	63	131.5	0
OH CAP	36	191	17	17	34.2	0
OK CAP	34	201	18	23	64.9	0
OR CAP	74	1169	110	189	427.8	5
PA CAP	69	915	24	26	47.85	10
RI CAP	15	78	14	14	31.06	3
SC CAP	16	74	12	18	21.2	1
SD CAP	14	148	31	48	51.1	6
TN CAP	39	244	21	28	43.7	2
TX CAP	200	1163	119	167	473.4	0
UT CAP	39	387	56	72	176.8	6
VA CAP	82	446	34	34	75.35	3
VT CAP	12	47	4	4	7.3	0
WA CAP	5	266	42	95	240	0
WI CAP	37	1764	23	32	59.5	1
WV CAP	10	133	3	3	8.3	4
WY CAP	24	127	20	32	45.6	6

* All data pulled from SARMASTER and may not reflect all missions/incidents

TABLE 8**TOTAL ACTIVITY BY STATE**

The Total Activity by State table charts the total SAR activity (by mission type) of federal assets in each state or other geographical region.

STATE	ACFT	BOAT	ELT	MED EVAC	MERCY	MSG PERS	PRECA	RESCUE	SRU TRANS	VEH	OTHER	TOTAL
AK	3		2									5
AL	14		109									123
AR	3		75								2	80
ATLANTIC	1	2	16				1				6	26
AZ		13	274	2				6			7	302
CA	39		629	1			1	1			23	702
CN			7				1	1			1	10
CO	19		88					3		1	20	131
CT			50				1					51
DC			10									10
DE	1		24									25
FL	22	2	612				6	1			42	685
GA	15		193				1				3	212
GULF OF MEXICO		1	7									8
IA	2		46								5	53
ID	7		61					5			12	85
IL	5		126								2	133
IN	4		74									78
KS	5		171				1				2	179
KY			66								1	67
LA	3	1	169				8				7	188
MA	1		81				2				5	89
MD	1		83								1	85
ME	3		49					1			3	56

STATE	ACFT	EPIRB	ELT	MED EVAC	MERCY	MSG PERS	PRECA	RESCUE	SRU TRANS	VEH	OTHER	TOTAL
MI	2		92	1							10	105
MN	6		93				1				4	104
MO	7		86								2	95
MS	5		89				1				1	96
MT	4		55					6		1	11	77
MEXICO			11	1							1	13
NC	5		215						1		4	225
ND	1		21									22
NE	2		48									50
NH			28				1		1			30
NJ	1		122								4	127
NM	7		117				1				6	131
NV	7		103				1				10	125
NY	7		164				1				4	176
OH	1		106					1			1	109
OK	4		93								1	98
OR	8		107					4		4	24	147
PA	3		110					1			8	122
PACIFIC			9				1	1				11
RI			18		1						1	20
SC	5		102								4	111
SD			27								2	29
TN	5		111								1	117
TX	12		564				44				6	626
UN- LOCATED			387								11	398

STATE	ACFT	EPIRB	ELT	MED EVAC	MERCY	MSG PERS	PRECA	RESCUE	SRU TRANS	VEH	OTHER	TOTAL
UT	4		68					2		1	7	82
VA	6		165								8	179
VT			22				1				2	25
WA	10		154	2				27			13	206
WI	7		94					1		1	4	107
WV	2		23								2	27
WY	10		18					1			11	40

* All data pulled from SARMASTER and may not reflect all missions/incidents

AIR FORCE RESCUE COORDINATION CENTER
 650 Florida Avenue, Stop 73
 Tyndall Air Force Base, Florida 32403
 Commercial 850-283-5955 / FAX 850-283-5101 / DSN 523-xxxx
<http://www.1af.acc.af.mil/units/afrcc/>

"These Things We Do ... That Others May Live"